



CGS PARTNERSHIP PROSPECTUS

2026 Annual Meeting

December 2-5 | Los Angeles, CA



About CGS

Since 1961, the Council of Graduate Schools (CGS) has been the only U.S. organization dedicated solely to the advancement of graduate education and research. When you reach CGS members, you reach graduate deans, major university decision-makers. CGS graduate deans represent approximately 450 universities in the U.S., Canada, and a diverse range of international institutions.

Contents

- 1 About CGS
- 2 Top Priorities for Graduate School leaders
- 3 Benefits of Exhibiting and Sponsoring
- 4 Propose a Session
- 6 Sponsorship Opportunities
- 8 Engagement Beyond the Meeting
- 11 CGS Members
- 15 Exhibitor Registration Form

ABOUT



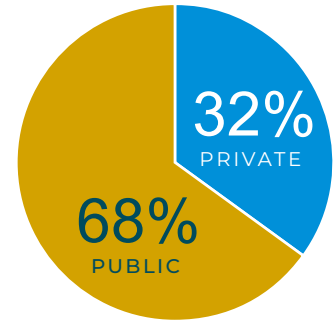
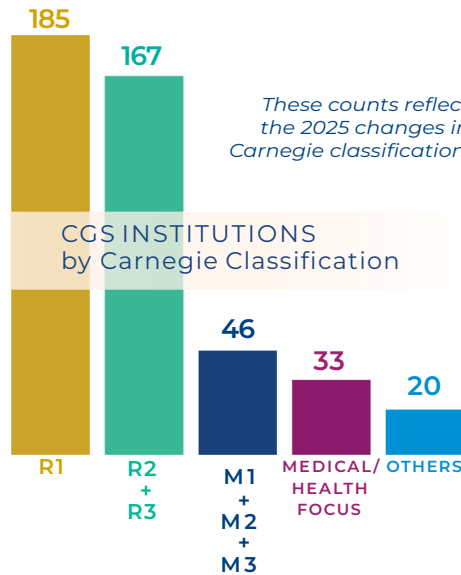
OUR MEMBERS

451

U.S. AND CANADIAN MEMBER UNIVERSITIES

23

INTERNATIONAL MEMBERS



The Carnegie classification system categorizes PhD-granting institutions by level of research activity (R1=highest) and master's colleges and universities by the number of degrees awarded (M1=larger).

as of January 1, 2025

DEGREES

CGS MEMBERS IN THE US AWARDED

78.6%

for all DOCTORAL DEGREES

for an annual total of

66,840

research/scholarship doctoral degrees

59%

of all MASTER'S DEGREES

for an annual total of

558,278

master's degrees



For more information and data sources, visit cgsnet.org/about.

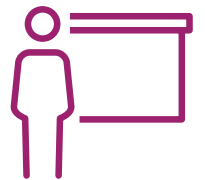
STUDENTS

1,761,023

AGGREGATE ENROLLMENT (master's and doctoral students)

354,713

ASSISTANTSHIPS SUPPORTED



RESEARCH

\$83,729,610,877

R&D EXPENDITURES

\$66,221,414,203

FEDERAL RESEARCH DOLLARS AWARDED

Who Attends the CGS Annual Meeting?

Forty percent of attendees are graduate deans, senior university decision-makers with authority in admissions, benchmarking, curriculum, learning assessment, and online education. Another 30 percent are assistant or associate deans. The remaining 30 percent of attendees serve in some other university role such as provost, director of admissions, director of diversity, or director of graduate studies in a department or are employed by a non-university organization.

THE 2025 CGS ANNUAL MEETING
ATTRACTED ATTENDEES FROM

48 States
AND THE DISTRICT
OF COLUMBIA

259
UNIVERSITIES

8
COUNTRIES

34
OTHER ORGANIZATIONS,
COMPANIES AND
FEDERAL AGENCIES

Top Priorities for Graduate School Leaders

- Admissions, recruitment, and enrollment
- Assessing student and/or workforce demand for graduate programs
- Badges, stackable credentials, and other non-degree graduate education
- Data analytics and machine learning in graduate education administration
- Faculty and advising
- Graduate student mental health and graduate program climate
- Online graduate education
- Organizational structure and infrastructure, including graduate school technology
- Student financial support
- Student professional development and career outcomes

“[the] CGS Annual Meeting is unmatched in its ability to connect graduate deans with peers, engage in meaningful dialogue about the future of graduate education, and explore innovative solutions to shared challenges. With its diverse sessions, collaborative atmosphere, and focus on emerging trends, the meeting empowers leaders to drive impactful change.”

—EMORY WOODARD
Dean of Graduate Studies, College of Liberal Arts and
Sciences, Villanova University



Benefits of & SPONSORING EXHIBITING

KEY DEADLINES

June 12, 2026	Early-bird exhibitor registration due
June 12, 2026	Session proposals due
July 31, 2026	Reserve sponsorships by this date
October 31, 2026	Exhibitor registration form due

Exhibitors Receive

- Registration for up to two representatives of your company. Includes full access to meeting sessions, all meal functions open to regular attendees, receptions, and refreshment breaks.
- Option to add one complimentary exhibit-hall only registration pass to your 2026 CGS Annual Meeting exhibitor registration, in addition to the two full registrations that are included with exhibiting (available only to sustaining members)
- Option to select exhibit table location (available only to sustaining members)
- Company description and link to your website on the CGS website
- Mailing labels (pdf format) of all Annual Meeting participants as of November 9. Sustaining members receive the list in Excel as well.
- Acknowledgment in Annual Meeting mobile app
- Six-foot skirted display table
- Internet access

Meeting Sponsors Receive

- Acknowledgment of your company in electronic mailing promoting the Annual Meeting
- Special thanks from the CGS President in their opening remarks to the meeting
- Projection of company logo via PowerPoint slide in general session room
- Acknowledgment in Annual Meeting mobile app and on the CGS website
- Additional benefits listed in individual sponsorship description

See the Exhibitor Registration form on page 16.

Social media promotion is part of the package.

All special event sponsorships (e.g., breakfasts, receptions) come with the guarantee of at least one dedicated “thank you” post from the CGS social media channels tagging your organization.



CGS Terms & Conditions

Right of Refusal

CGS reserves the right to refuse to rent exhibit space, to release a sponsorship, or to deny membership in the Sustaining Membership Network to any applicant.

Disavowal of Endorsement

CGS's acceptance of a contract with a potential exhibitor, sponsor, or Sustaining Membership Network member is not, and should not be construed as an endorsement by CGS of the organization or of its products or services.

Guarantee Policy

Sponsorships and exhibit space are guaranteed once payment has been received. All payments are subject to the CGS refund policy as specified in the sponsorship agreement.

Propose a Session

Call for Proposals

Members of the non-profit and business communities help the Council of Graduate Schools fulfill its mission of advancing graduate education. To help our members benefit from the expertise of industry leaders, CGS invites proposals from companies and non-profits to propose Annual Meeting sessions of interest to the CGS membership. Companies and

non-profits gain valuable opportunities to engage with leadership and staff from CGS's 450 member universities. CGS members are national and international thought leaders in their fields, and at the Annual Meeting they share up-to-date information about needs and trends in graduate education.

Lightning Sessions

FRIDAY, DECEMBER 4, 2026, 1:15-1:45 p.m.

4 SPOTS AVAILABLE

MEMBERS: \$4,500; NONMEMBERS: \$6,000

These **30-MINUTE SESSIONS** are an opportunity to share, demonstrate and discuss a recent innovation in graduate education with graduate deans and staff. While we welcome proposals on any topic, CGS gives particular priority to proposals focused on areas of special interest to graduate education administrators:

- Graduate enrollment management
- Supporting student retention and success
- Online education
- Professional development for graduate students
- Business analytics for graduate schools and programs
- International student recruitment

Benefits

- Visibility among attendees at the largest national meeting of graduate deans and staff
- 30-minute session led by representatives of your company
- Opportunity to share recent innovations in your field
- Opportunity to present meaningful content to CGS community
- Recognition as the session sponsor in the CGS Annual Meeting mobile app
- Recognition as an Annual Meeting sponsor in Annual Meeting mobile app and on the CGS website

Session Guidelines

- Panel may endorse a particular product or service
- Panel should not serve as a focus group
- Please submit proposals via the [online form](#) or a single pdf attachment to cbright@cgs.nche.edu
- If proposal is selected, proposer agrees to pay all costs within 30 days of selection notice

Proposal Guidelines

- Proposal should not exceed two pages, single spaced
- Proposal should include contact information for primary contact as well as the names and affiliations of potential speakers
- Proposals will be evaluated according to the following criteria:
 - Potential interest to graduate deans and staff
 - Integration of relevant data and/or case studies
 - Established record of success with the innovation(s) you plan to share
 - Knowledge and expertise of presenters

PROPOSALS DUE: June 12, 2026



Concurrent Sessions

THURSDAY, DECEMBER 3 AND FRIDAY, DECEMBER 4, 2026
4 SPOTS AVAILABLE
MEMBERS: \$7,000; NONMEMBERS: \$9,500

These **ONE-HOUR SESSIONS** are integrated into CGS's regular programming of concurrent sessions. Your company is invited to collaborate with clients or colleagues to demonstrate its thought leadership on pressing issues in graduate education.

Benefits

- Visibility among attendees at the largest national meeting of graduate deans and staff
- One-hour concurrent session led by representatives of your company
- Opportunity to demonstrate thought leadership
- Opportunity to present meaningful content to CGS community
- Recognition as the session sponsor in the CGS Annual Meeting mobile app
- Recognition as an Annual Meeting sponsor in Annual Meeting mobile app and on the CGS website

Session Guidelines

- Panel content should not exceed 45 minutes, to allow ample time for questions (2-3 speakers is optimal)
- Panel should not be focused on a particular product or service
- Panel should not serve as a focus group
- Please submit proposals via the [online form](#) or a single pdf attachment to cbright@cgs.nche.edu
- If proposal is selected, proposer agrees to pay all costs within 30 days of selection notice

Proposal Guidelines

- Proposal should not exceed two pages, single spaced.
- Proposal should include contact information for primary contact as well as the names and affiliations of potential speakers. At least one graduate dean at a member university should present at the session.
- Proposals will be evaluated according to the following criteria:
 - Addresses pressing issue in graduate education
 - Knowledge and expertise of presenters
 - Commitment of at least one graduate dean at a CGS member university to participate
 - Integration of relevant data or examples
 - Novelty (avoids overlap with other sessions likely to be held at this year's Annual Meeting)



Sponsorship Opportunities



Lanyards

Your company's name and logo will be prominently featured on the lanyards that meeting attendees will use to wear their nametags throughout the meeting. An added benefit of this sponsorship is that lanyards are often visible in meeting photos.

MEMBERS: \$6,500; NONMEMBERS: \$8,000

Hotel Room Key Cards

Reach nearly all the meeting registrants with your company's name and logo printed on the back and front of hotel room key cards. Presented at check-in to each attendee, key cards ensure that your company's name will be encountered early and repeatedly throughout the meeting.

MEMBERS: \$9,500; NONMEMBERS: \$11,000

Conference Wi-Fi

Provide CGS Annual Meeting attendees with complimentary Wi-Fi that is available throughout the exhibit hall and meeting spaces. Sponsorship includes the opportunity to select a custom password, logo recognition on the meeting mobile app, signage throughout the meeting, and acknowledgement in the CGS President's opening remarks.

MEMBERS: \$6,500; NONMEMBERS: \$8,000

Conference Mobile App

Prominently feature your company's brand and expertise by sponsoring the Annual Meeting mobile app. The ad can link to an external webpage featuring a white paper, case study or other online marketing materials you would like to feature. In addition, your sponsorship will be recognized with a sign at the registration desk, and verbal recognition of the sponsorship during the meeting.

MEMBERS: \$6,500; NONMEMBERS: \$8,000

Assistant & Associate Deans' Breakfast

Thursday, December 3

Create brand recognition for your company and connect with emerging leaders in graduate education at this annual breakfast for assistant and associate deans. Receive recognition from the CGS leadership at the opening to this breakfast and provide materials at every table.

MEMBERS: \$5,750; NONMEMBERS: \$7,000



MEMBERS RECEIVE EXCLUSIVE BENEFITS

Companies and organizations are invited to apply to join the CGS Sustaining Membership Network. Membership provides access to discounted pricing, insider information, and more. To learn about becoming a member, please contact Colton Bright at cbright@cgs.nche.edu.

AT THE CGS 66TH ANNUAL MEETING

Plenary Session Sponsorships

Thursday, December 3 (afternoon plenary)

Friday, December 4 (morning plenary)

Friday, December 4 (afternoon plenary)

The CGS Annual Meeting plenary sessions, which feature notable speakers on pressing issues in graduate education, attract the largest audiences at the Annual Meeting. Benefits of this highly visible sponsorship include the option to provide a brief video about your company or for a company representative to deliver brief non-commercial remarks to all meeting attendees before the plenary session is introduced. A CGS leader will recognize and thank the sponsor and introduce the video or company representative. In addition, sponsors receive logo recognition on session signage and may place brochures or publications on designated materials tables in the plenary session room or include an electronic resource in the session description in the meeting mobile app.

MEMBERS: \$5,000; NONMEMBERS: \$6,500

Breakfast Presentations for All Attendees

Thursday, December 3

Friday, December 4

Saturday, December 5

In sponsoring a breakfast open to all meeting attendees, a spokesperson from your organization will give a 30-minute presentation, followed by a question-and-answer session with CGS deans. This is an opportunity to offer expertise on a trend in graduate education, present a new product or service, and gain valuable insights and feedback from decision-makers in the graduate school.

PLEASE INQUIRE ABOUT PRICING.

Evening Reception for All Attendees

Thursday, December 4

After a busy day of panel sessions, the Thursday evening reception offers Annual Meeting attendees an opportunity to relax, network, and discuss ideas shared in meeting sessions. By sponsoring this well-attended event, your company will be acknowledged by the CGS President during the opening plenary session. Exclusive or lead reception sponsors will be invited to deliver brief welcoming remarks.

PLEASE INQUIRE ABOUT PRICING FOR EXCLUSIVE OR LEAD SPONSORSHIP OPTIONS.

RECEPTION CO-SPONSORSHIP (UP TO 4 CO-SPONSORS):

MEMBERS: \$6,000; NONMEMBERS: \$7,500

Propose a Sponsorship

Don't see your ideal sponsorship opportunity listed here? Propose a unique sponsorship that brings value to your company as well as to CGS member institutions. Please note that proposals are subject to approval by CGS and pricing is determined on a case-by-case basis.

Maximize your impact with the #CGSCommunity.

Did you know? CGS's LinkedIn account has nearly **3,800 followers**, nearly 60% of whom are in leadership positions. During last year's Annual Meeting, CGS posts reached over 7,000 people and averaged a **7.15% click-through rate**.



Engagement BEYOND the Meeting

BECOME A MEMBER

CGS invites organizations with an interest in promoting graduate education to apply for membership in the CGS Sustaining Membership Network. Membership gives companies and organizations:

- Exclusive opportunities for visibility with CGS institutions at the Annual Meeting and throughout the year.
- Timely access to graduate education data and insider knowledge.
- Discounts on CGS meeting registrations, exhibitor fees, webinars, workshops, print publications, and more.
- Additional benefits accrue with increased levels of investment.

Annual dues range from \$1,000 – \$25,000.

To learn more about applying for membership, please contact Colton Bright at cbright@cgs.nche.edu.





Sponsor a Webinar

Interact with the graduate education community in real time: submit a proposal to lead a webinar on a pressing graduate education issue, or cosponsor a planned CGS webinar. Recent CGS webinars have drawn 100-300+ participants, plus as many as 360 views on YouTube after the live webinar.

Members \$2,000 - \$6,000

Nonmembers \$2,500 - \$7,000

To learn more about the CGS sponsored webinar program, please contact Colton Bright at cbright@cgs.nche.edu.



CGS MEMBERS

ALABAMA

University of Montevallo
Alabama A&M University
Alabama State University
The University of Alabama
The University of Alabama at Birmingham
The University of Alabama in Huntsville
Auburn University
University of South Alabama
Jacksonville State University

ALASKA

University of Alaska Fairbanks
University of Alaska Anchorage

ARIZONA

Arizona State University
University of Arizona
Northern Arizona University

ARKANSAS

University of Central Arkansas
University of Arkansas
University of Arkansas at Little Rock
Arkansas State University
Arkansas Tech University

CALIFORNIA

California State University, Monterey Bay
University of the Pacific
University of California, Merced
University of California, Santa Cruz
University of California, Riverside
California State University, Stanislaus
California State University, San Bernardino

San Diego State University
California State University, Bakersfield
California State University, Fresno
California State University, Sacramento
National University
California State University, Los Angeles
University of California, Santa Barbara
University of California, Irvine

Azusa Pacific University
The Claremont Graduate University

Fielding Graduate University

California Polytechnic State University

California Institute of Integral Studies

University of California, San Francisco

California State University, Long Beach

San Jose State University

California Institute of Technology

University of California, Davis

Stanford University

University of Southern California

University of California, San Diego

University of California, Berkeley

University of California, Los Angeles

Loma Linda University

Chapman University

COLORADO

University of Colorado Anschutz Medical Campus
Adams State University
University of Denver

Colorado School of Mines
Metropolitan State University of Denver
Colorado State University
University of Colorado Denver
University of Northern Colorado

University of Colorado, Colorado Springs

University of Colorado Boulder

Colorado State University Pueblo

CONNECTICUT

Southern Connecticut State University

Sacred Heart University

University of Bridgeport

University of Connecticut

Yale University

Wesleyan University

DELAWARE

University of Delaware

Delaware State University

DISTRICT OF COLUMBIA

University of the District of Columbia

Howard University

American University

Gallaudet University

Georgetown University

The George Washington University

The Catholic University of America

FLORIDA

Florida A&M University

Florida Atlantic University

Florida International University

University of West Florida

University of Miami

University of South Florida

Florida Gulf Coast University

University of Central Florida

University of North Florida

Florida State University

University of Florida

GEORGIA

Morehouse School of Medicine

Georgia State University

Clark Atlanta University

Georgia Southern University

Kennesaw State University

Georgia Institute of Technology

University of Georgia

Augusta University

Valdosta State University

University of North Georgia

Emory University

HAWAII

University of Hawaii at Manoa

IDAHO

University of Idaho

Idaho State University

ILLINOIS

University of Illinois Chicago

Illinois Institute of Technology

Northern Illinois University

Illinois State University

University of Illinois at Springfield

Western Illinois University

Eastern Illinois University

Rush University

Loyola University of Chicago

Lewis University

Bradley University

Members as of April 1, 2026

CGS MEMBERS

Rosalind Franklin University of Medicine and Science

Southern Illinois University Carbondale

Governors State University

Southern Illinois University Edwardsville

University of Illinois Urbana-Champaign

The University of Chicago

Northwestern University

North Central College

INDIANA

Indiana University Indianapolis

University of Southern Indiana

Ball State University

Indiana State University

Valparaiso University

Purdue University

Indiana University

University of Notre Dame

IOWA

The University of Northern Iowa

Iowa State University

The University of Iowa

St. Ambrose University

KANSAS

Wichita State University

Kansas State University

Fort Hays State University

The University of Kansas

KENTUCKY

Spalding University

University of Louisville

University of Kentucky

Northern Kentucky University

Western Kentucky University

Eastern Kentucky University

LOUISIANA

Grambling State University

Louisiana State University and A & M College

Northwestern State University of Louisiana

The University of New Orleans

University of Louisiana at Lafayette

Louisiana State University Health Sciences Center

Tulane University

MAINE

University of Maine

MARYLAND

Morgan State University

University of Maryland, Eastern Shore

Coppin State University

University of Maryland, College Park

University of Maryland, Baltimore County

Bowie State University

Loyola University Maryland

Hood College

University of Maryland, Baltimore

The Johns Hopkins University

Towson University

Salisbury University

MASSACHUSETTS

University of Massachusetts Boston

Clark University

Woods Hole Oceanographic Institution

Worcester Polytechnic Institute

Wentworth Institute of Technology

Merrimack College

Bridgewater State University

Tufts University

Boston University

Northeastern University

Brandeis University

University of Massachusetts Amherst

University of Massachusetts Medical School

University of Massachusetts Lowell

Salem State University

Fitchburg State University

Harvard University

Massachusetts Institute of Technology

Boston College

Curry College

MICHIGAN

Michigan Technological University

Eastern Michigan University

Kettering University

Van Andel Institute Graduate School

Wayne State University

Western Michigan University

Oakland University

Ferris State University

Grand Valley State University

Central Michigan University

Northern Michigan University

Michigan State University

University of Michigan

Andrews University

University of Michigan-Flint

MINNESOTA

Walden University

St. Cloud State University

Minnesota State University, Mankato

Hazelden Betty Ford Graduate School

Bemidji State University

Minnesota State University Moorhead

Rasmussen University

University of Minnesota

Concordia University St. Paul

MISSISSIPPI

Jackson State University

Alcorn State University

Mississippi State University

University of Mississippi Medical Center

University of Mississippi

University of Southern Mississippi

MISSOURI

Missouri University of Science and Technology

Southeast Missouri State University

Missouri State University

University of Central Missouri

Truman State University

Saint Louis University

Kansas City University

University of Missouri, Kansas City

Missouri Western State University

Washington University in St. Louis

University of Missouri, Columbia

MONTANA

University of Montana

Montana State University

NEBRASKA

University of Nebraska at Omaha

University of Nebraska at Kearney

Members as of April 1, 2026

Creighton University
University of Nebraska
Medical Center
University of Nebraska-
Lincoln

NEVADA

University of Nevada, Las
Vegas
University of Nevada, Reno
Roseman University of
Health Sciences

NEW HAMPSHIRE

Dartmouth College
University of New
Hampshire

NEW JERSEY

Montclair State University
Rutgers University, Newark
Campus
Stevens Institute of
Technology
Rowan University
Caldwell University
New Jersey Institute of
Technology
Stockton University
Seton Hall University
Monmouth University
The College of New Jersey
Princeton University
Rutgers University, School
of Graduate Studies

NEW MEXICO

New Mexico State
University
New Mexico Institute of
Mining and Technology
New Mexico Highlands
University
University of New Mexico

NEW YORK

St. John's University
City College of CUNY
John Jay College of
Criminal Justice

The Rockefeller University
Rensselaer Polytechnic
Institute
The New School for Social
Research
Fordham University
Hofstra University
New York Institute of
Technology
City University of New York
Graduate Center
The University at Albany,
State University of New
York

SUNY College of
Environmental Science and
Forestry

St. Bonaventure University
Sarah Lawrence College
State University of New
York at Oswego
New York Medical College
Clarkson University
Rochester Institute of
Technology
Ithaca College
Albert Einstein College of
Medicine

State University of New
York Upstate Medical
University

State University of New
York at Binghamton

Columbia University
New York University

The University of Rochester
Cornell University
Syracuse University
The University at Buffalo,
SUNY

Stony Brook University
SUNY Empire State
University

State University of New
York at Oneonta

Nazareth University
Memorial University

NORTH CAROLINA

North Carolina Agricultural
& Technical State University

North Carolina Central
University

University of North
Carolina at Pembroke

University of North
Carolina at Greensboro

University of North
Carolina at Charlotte

Fayetteville State
University

Duke University

North Carolina State
University

University of North
Carolina at Wilmington

Western Carolina
University

Appalachian State
University

Winston-Salem State
University

Wake Forest University

East Carolina University

University of North
Carolina at Chapel Hill

NORTH DAKOTA

North Dakota State
University

University of North Dakota

OHIO

Shawnee State University

University of Dayton

Miami University

Bowling Green State
University

The University of Toledo

Cleveland State University

Ohio University

Youngstown State
University

John Carroll University

University of Cincinnati

Northeast Ohio Medical
University

The University of Akron
Wright State University
Kent State University
Case Western Reserve
University
The Ohio State University

OKLAHOMA

Langston University
University of Oklahoma
The University of Central
Oklahoma
Oklahoma State University
University of Oklahoma
Health Sciences Center
The University of Tulsa

OREGON

Oregon Health and Science
University
Oregon State University
Portland State University
University of Oregon
Western Oregon University

PENNSYLVANIA

Lehigh University
Drexel University
Bryn Mawr College
Millersville University
Kutztown University of
Pennsylvania
International Institute for
Restorative Practices
Bucknell University
West Chester University
Thomas Jefferson
University
Duquesne University
Villanova University
Temple University
Indiana University of
Pennsylvania
Carnegie-Mellon University
University of Pennsylvania
University of Pittsburgh
The Pennsylvania State
University

Members as of April 1, 2026

CGS MEMBERS

PUERTO RICO

Inter American University of Puerto Rico

Polytechnic University of Puerto Rico

RHODE ISLAND

University of Rhode Island

Brown University

SOUTH CAROLINA

University of South Carolina Upstate

University of South Carolina

Medical University of South Carolina

Furman University

Clemson University

College of Charleston

SOUTH DAKOTA

University of South Dakota

South Dakota State University

TENNESSEE

Belmont University

Tennessee State University

University of Memphis

Middle Tennessee State University

Meharry Medical College

Vanderbilt University

The University of Tennessee Health Science Center

The University of Tennessee at Chattanooga

Tennessee Technological University

The University of Tennessee, Knoxville

East Tennessee State University

Lipscomb University

TEXAS

Texas Southern University

University of Texas Health Science Center at San Antonio

Texas State University

The University of Texas at San Antonio

The University of Texas Rio Grande Valley

Texas A&M International University

Texas A&M University - Corpus Christi

University of Houston

The University of Texas MD Anderson Cancer Center UTHealth Graduate School of Biomedical Sciences

Texas Woman's University

The University of Texas at Arlington

The University of Texas at El Paso

Sam Houston State University

East Texas A&M University

Lamar University

Texas A&M University-Central Texas

Baylor College of Medicine

West Texas A&M University

University of Texas Southwestern Medical Center

University of Texas Grad School of Biomedical Sci at Galveston

University of North Texas

The University of Texas at Tyler

Texas Tech University

The University of Texas at Dallas

Texas A&M University at Galveston

University of North Texas Health Science Center at Fort Worth

Midwestern State University

Rice University

The University of Texas at Austin

Texas A&M University

Tarleton State University

Stephen F. Austin State University

Prairie View A&M University

University of North Texas at Dallas

Southern Methodist University

Texas Christian University Baylor University

UTAH

Utah State University

University of Utah

Utah Valley University

Brigham Young University

VERMONT

University of Vermont

VIRGINIA

Norfolk State University

Hampton University

William & Mary

Virginia Commonwealth University

George Mason University

Virginia Polytechnic Institute and State University

James Madison University

Old Dominion University

Radford University

University of Virginia

Virginia State University

WASHINGTON

Western Washington University

Central Washington University

Washington State University

Eastern Washington University

University of Washington

WEST VIRGINIA

American Public University

Marshall University

West Virginia University

Fairmont State University

WISCONSIN

University of Wisconsin - Whitewater

Medical College of Wisconsin

Marquette University

University of Wisconsin-Milwaukee

University of Wisconsin-Madison

University of Wisconsin-Green Bay

WYOMING

University of Wyoming

CANADIAN MEMBERS

University of Calgary

University of Alberta

University of Manitoba

Memorial University

McMaster University

Queen's University

Western University

University of Toronto

Université Laval

Université du Québec

Concordia University, Canada

McGill University

University of Regina

Exhibitor Registration Form

66TH ANNUAL MEETING
DECEMBER 2-5, 2026 | LOS ANGELES, CA



STEP 1: PROVIDE YOUR CONTACT INFORMATION

PRIMARY CONTACT _____

COMPANY NAME _____

ADDRESS _____

CITY _____ STATE _____ ZIP _____

EMAIL _____

This application reserves exhibit space for your company at the Council of Graduate Schools' 66th Annual Meeting. Exhibit space is guaranteed once payment has been received. All payments are subject to the CGS refund policy.

STEP 2: SELECT REGISTRATION

- \$3,000 Member Early-bird Rate (before June 12)
- \$5,000 Nonmember Early-bird Rate (before June 12)
- \$3,500 Member rate (must be received by October 31)
- \$6,000 Nonmember rate (must be received by October 31)

STEP 3: INDICATE YOUR EXHIBIT SPACE PREFERENCES

Please list any categories of exhibitors you do not wish to be near:

STEP 4: SELECT YOUR PAYMENT METHOD

- Check, payable to Council of Graduate Schools
- MasterCard Visa Discover AmEx

NAME ON CARD _____

CARD NUMBER _____ CVV NUMBER _____ EXP. DATE _____

SIGNATURE _____

STEP 5: SUBMIT YOUR REGISTRATION

Email: Send scanned form and credit card payment information to: cbright@cgs.nche.edu

Mail: Mail completed registration form and payment to:
Colton Bright
One Dupont Circle, NW
Suite 230
Washington, DC 20036

Right of Refusal

CGS reserves the right to refuse to rent exhibit space, to release a sponsorship, or to deny membership in the Sustaining Membership Network to any applicant.

Disavowal of Endorsement

CGS's acceptance of a contract with a potential exhibitor, sponsor, or Sustaining Membership Network member is not, and should not be construed as an endorsement by CGS of the organization or of its products or services.

Questions?

Please contact Colton Bright at 202-461-3855 or cbright@cgs.nche.edu.

Save the Date

2027 Summer Workshop



Save the Date 2027 Annual Meeting



WASHINGTON, DC

December 1-4, 2027

